



A Community Education, Health and Recreation Resource of California Hospital Medical Center

EARLY HEAD START PROGRAM

ANNUAL REPORT

2017

California Hospital Medical Center



“Health is more than not being sick; it is well-being in mind, body, and community”

The mission of California Hospital Medical Center is to:

- Deliver compassionate, high quality, affordable health services;
- Provide direct services to those who are poor and disenfranchised and to advocate on their behalf;
- Partner with others in the community to improve the quality of life.

California Hospital Medical Center (CHMC), a non-profit community teaching hospital, has been serving the needs of central and downtown Los Angeles since 1887. As one of our city’s major birthing centers, delivering nearly 4,000 infants each year, CHMC has long been considered a center of excellence in its work with pregnant women, infants, and children.

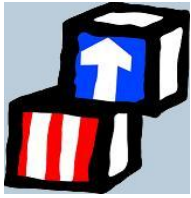
HOPE STREET MARGOLIS FAMILY CENTER



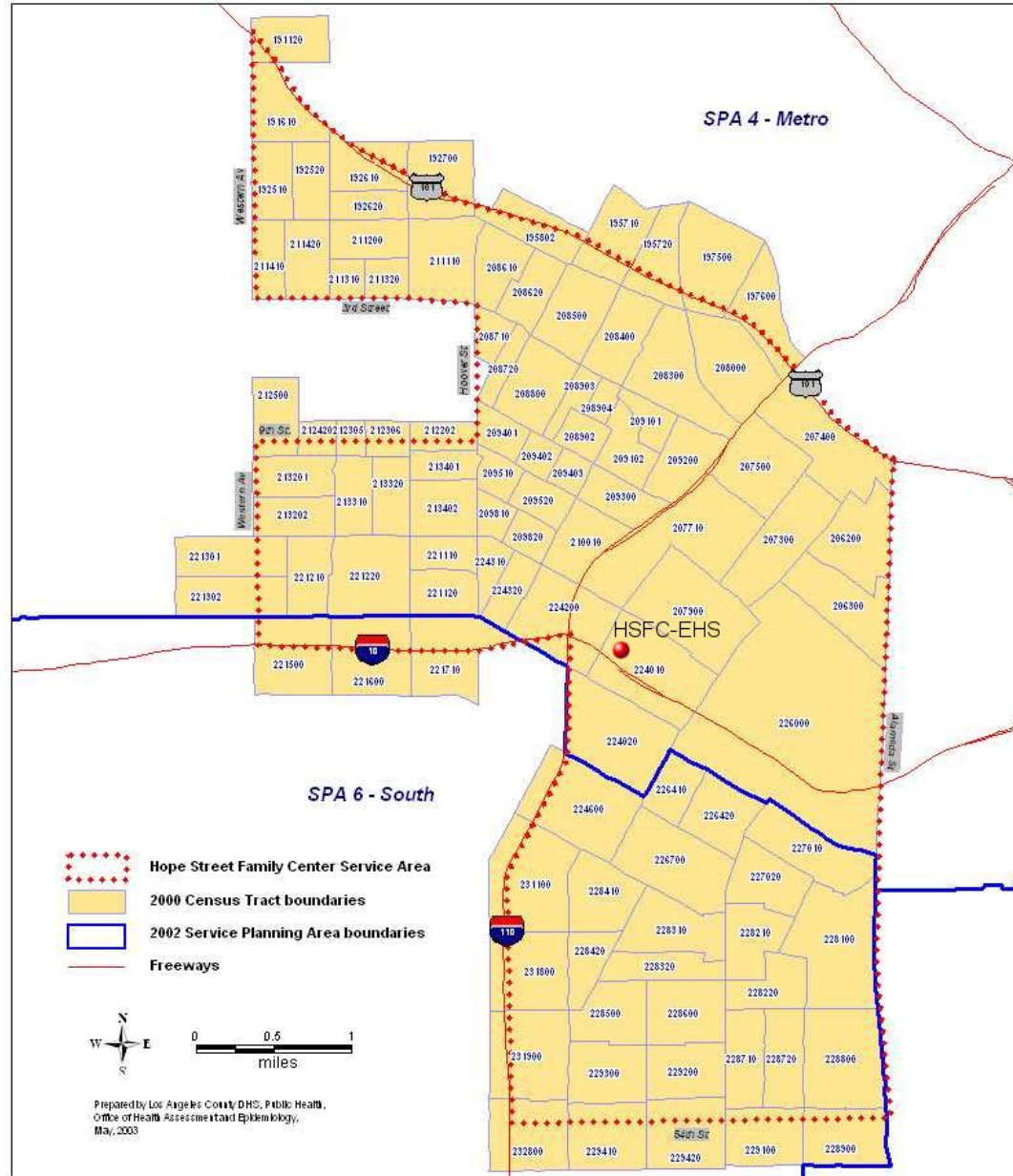
The mission of the Hope Street Early Head Start Program is to:

- Enhance the capacity of parents and families to nurture and care for their children.
- Promote children's overall health, development, school readiness, and academic achievement.
- Strengthen existing service delivery networks and foster community partnerships, by developing services that are accessible and responsive to the community we serve.

Hope Street's Early Head Start Program was established in 1997 as a collaboration between California Hospital Medical Center and the University of California, Los Angeles. Located adjacent to the hospital campus, our Early Head Start program provides a continuum of early care and education, health and nutrition, mental health, disabilities, and family services that support young children and their families.



Service Area **California Hospital Medical Center** **Hope Street Family Center Early Head Start Program**



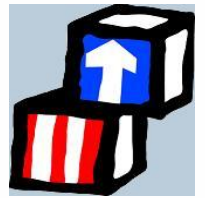
Service Area:

The EHS geographic area is roughly bounded on the north by the 101 Freeway; on the east by Alameda Street; on the south by 54th Street; and on the west by the 110 Freeway to the 10 Freeway to Western Ave. to 9th St. to Hoover St. to 3rd St. and to Western Ave.

Community Needs Assessment

Indicator	HSFC-EHS Service Area	Los Angeles County
Income/Poverty		
Households with annual incomes under \$25,000	45%	24%
Families with children living in poverty	29%	12%
Children 0-4 year living in poverty	22,823 (47%)	168,867 (27%)
Educational Attainment		
Adults with less than a 9 th grade education	29%	14%
Ethnicity/Language		
Population that is Latino	69%	49%
Primary language spoken at home is Spanish	68%	40%
Health/Prenatal Care		
Preterm Births	11%	10%
Prenatal Care in First Trimester	77%	82%
Infant Death Rate (per 1,000 live births)	5.6	4.6
Childhood Disabilities		
Children with identified disabilities, 0-17 years	3.6%	-
Childcare		
Shortfall of spaces for children 0-3	434	-

EHS Program Overview



Our EHS program provides full-year home-based, center-based, and combination option services for 272 low-income pregnant women and families with young children, 0-3 years of age.

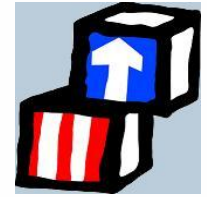
We offer a continuum of program options that is responsive to the varied needs of young families. Enrollment priorities include children with special needs, children in foster care, homeless families, teen parents, and non-English speaking parents.

Early Head Start Program Options

- **152 families are served through the home-based option**
- **72 families receive full-day center-based option services**
- **48 families receive a combination of center and home-based services**

Working in close partnership with families, our multidisciplinary team of teachers, home visitors, nurses, social workers and psychologists foster children's development and enhance the quality of life for families, ensuring access to a comprehensive network of services, many of which are located on or adjacent to the CHMC campus.

EHS Program Enrollment

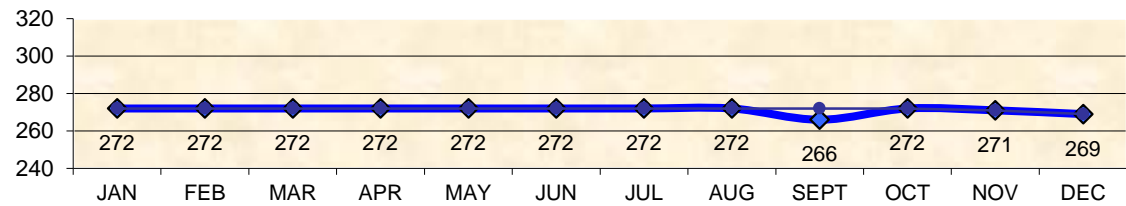


Funded Enrollment: 272 children and pregnant women

Services were provided to 421 children and pregnant mothers. There are 15,855 income eligible children within the service area. 2.4% of eligible children were served.

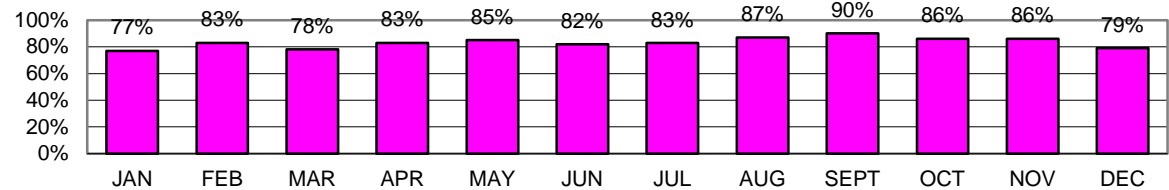
2017 PIR Data

Enrollment 2017



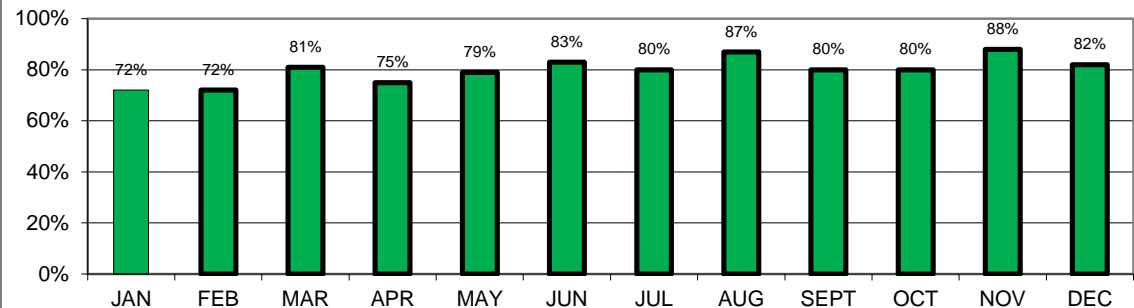
Monthly Enrollment Requirement - 272

Center Based Attendance 2017



Attendance Requirement 85%

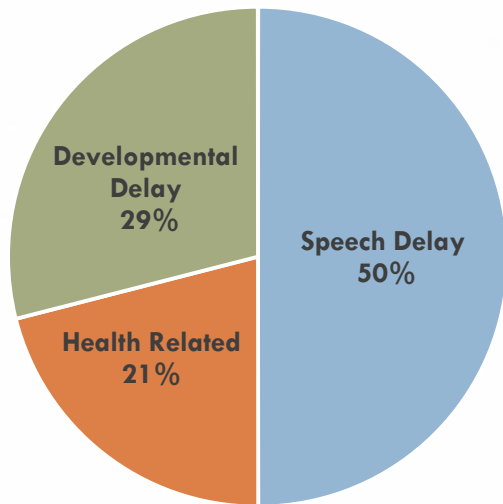
Combination Option Attendance - 2017



Mental Health & Disabilities Services

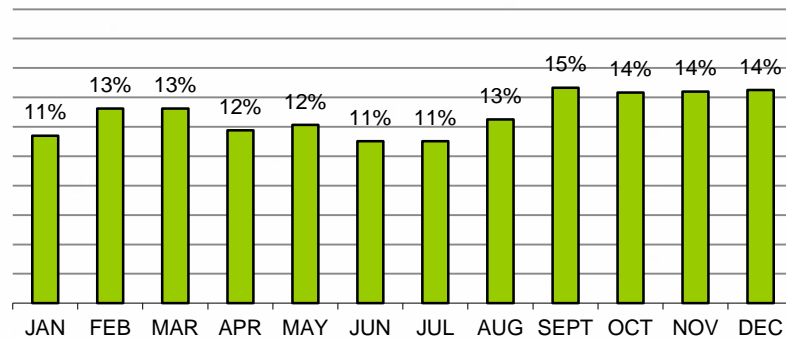


Types of Disabilities



Thirteen percent (13%) of EHS children had a disability, exceeding the minimum requirement of 10%.

Monthly Disabilities Enrollment



Disability Requirement - 10%

EHS provides supportive services for children with a variety of disabilities, as illustrated above.



Health Services Report

Children and pregnant women with an ongoing source of continuous & accessible health care and insurance	100%
Children up-to-date on a schedule of prevention and primary healthcare	89%
Children diagnosed with a chronic condition needing treatment <ul style="list-style-type: none">• Anemia• Asthma• Hearing difficulties• Vision problems	12%
Children who received or are receiving medical treatment for identified conditions	100%
Children with up-to-date immunizations	92%
Children with up-to-date preventative oral health care	100%
Pregnant women receiving prenatal health care	100%

School Readiness

Goals

- *Children will learn about themselves*
- *Children will learn about their feelings*
 - *Children will learn about others*
- *Children will learn about communicating*
 - *Children will acquire thinking skills*
- *Children will learn about moving and doing*

Our Philosophy

School readiness is rooted in the interactions that young children have with their caregivers and early environments.

Our Approach

We provide a continuum of health, mental health, family support, and early childhood education services that improves children's environments, promotes early development, and supports parents in their role as their child's first teacher

School Readiness

Desired Outcomes: Healthy physical, cognitive, social, language, and emotional development

DRDP- Fall 2017	Approach to Learning- Regulation	SSD (Social- Emotional)	LLD (Language & Literacy)	COG (Cognitive)	Physical Development - Health
Target Goal: Responding Later Children Ages 10-12 mo.& enrolled at least 6 months who achieved mastery	94%	100%	100%	88%	89%
Target Goal: Exploring Early Children Ages 21-24 mo. & enrolled at least 6 months who achieved mastery	88%	88%	88%	84%	94%
Target Goal: Exploring Later Children Ages 32-36 mo.& enrolled at least 6 months who achieved mastery	83%	93%	80%	87%	87%

Children's development is assessed on a quarterly basis throughout the year. Desired Results Developmental Profile (2015) quarterly mean domain subscale scores reflect strong developmental gains for children in all age groups.

Parent Involvement Opportunities

- Volunteering within the EHS program and California Hospital Medical Center
 - Family Literacy Classes
 - Socialization
 - Educational Workshops and Classes
 - Healthy Lifestyle Activities: Yoga and Cooking Classes
- Health, Self Assessment, and Community Assessment Committees
 - Parent Committee and Policy Council



Parent Success Story



At 23 I thought I was old enough to have a child. I found out quickly that age doesn't prepare you for motherhood. Then I found Hope Street. Hope Street staff became my role models. They became my support and my biggest cheerleaders. My home visitor knew what I was battling and little by little I was able to believe that I was doing well. In that first week, my home visitor and I knew I could be successful.

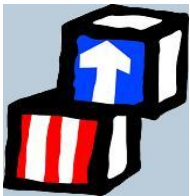
Week by week Hope Street's staff would teach me something new about parenting and child development. Week by week I grew as a mother and as an individual.

It has been almost eight years since I started my journey with Hope Street and I am beyond proud that I now get to be part of Hope Street through my role as a Community Outreach Representative. I provide support to Hope Street's various programs like Family Literacy, Home Visitation, and the Parent Policy Council. It has been truly rewarding to work here and give back to the center that has given me so much.

-Sandra

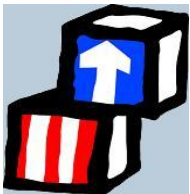
EHS End of Year Financials

Description	January 1, 2017 – December 31, 2017		
	Federal Funds	Federal Training	Non-Federal Funds
PERSONNEL			
Salaries	\$2,500,371		\$14,062
Fringe Benefits	\$730,108		\$4,107
SUPPLIES	\$31,110		
TRAINING		\$89,693	
CONTRACTUAL	\$94,975		
OTHER	\$96,776		\$938,450
Indirect	\$283,440		
TOTAL OPERATIONS	\$3,736,780	\$89,693	\$956,619



EHS FY 2018 Budget Projections

Description	Federal Funds	Federal Training	Non-Federal Funds
PERSONNEL			
Salaries	\$2,475,313		
Fringe Benefits	\$747,545		
SUPPLIES	\$18,000		
TRAINING		\$89,693	
CONTRACTUAL	\$100,961		
OTHER	\$111,518		\$947,369
Indirect	\$283,443		
TOTAL OPERATIONS	\$3,736,780	\$89,693	\$956,618



EHS Federal and Non-Federal Share Budgets

Hope Street - EHS Program (Projected)	2019
Federal Share Budget Total	\$3,826,473
Non-Federal Share Budget Total	\$956,618
Early Head Start Budget Total	\$4,783,091

Audits & Reviews

- HSKI-C ERSEA, FISCAL, GOVERNANCE Review

No findings

- HSKI-C Health and Safety Review

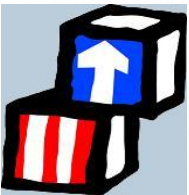
No findings

- Child and Adult Food Program (CAAFP)

No findings

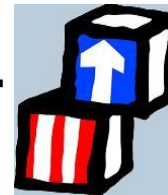
- 2017 A133 audit

No findings

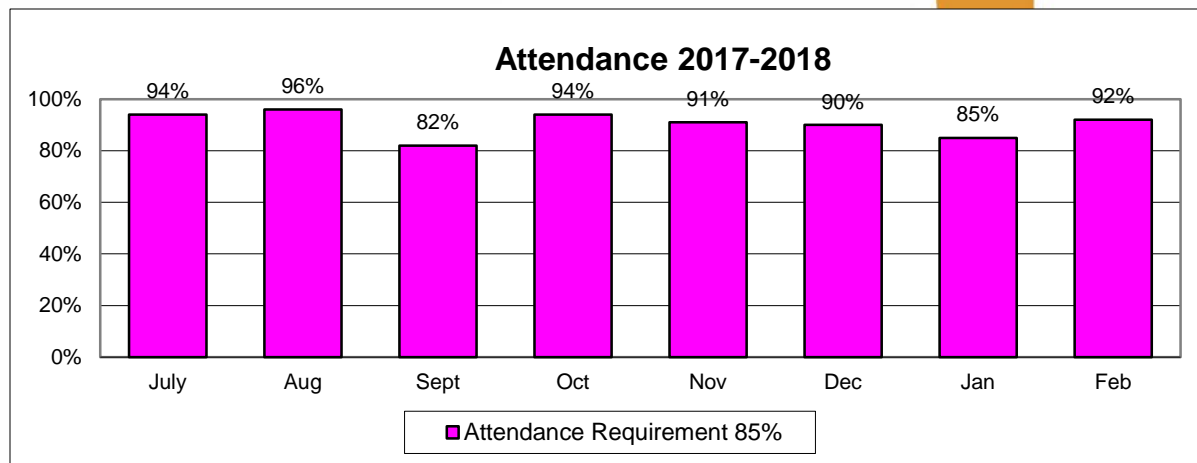
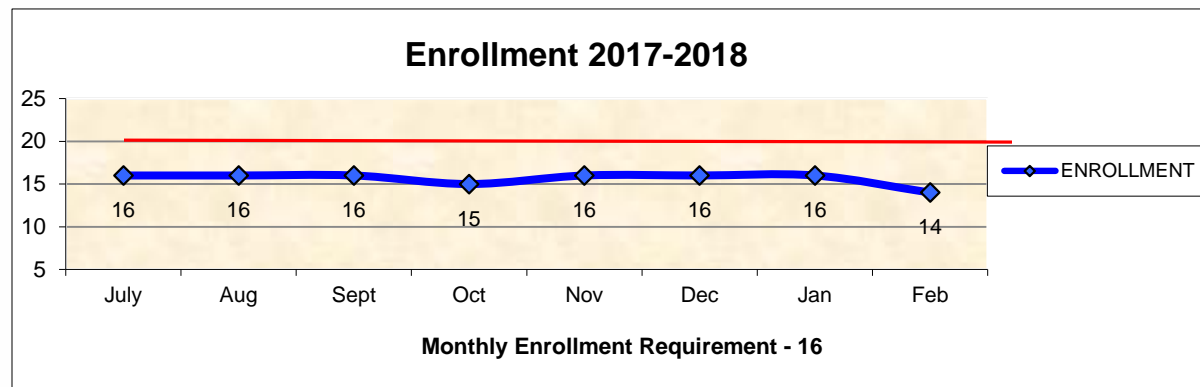


EHS Child Care Partnership (CCP) Program

Enrollment



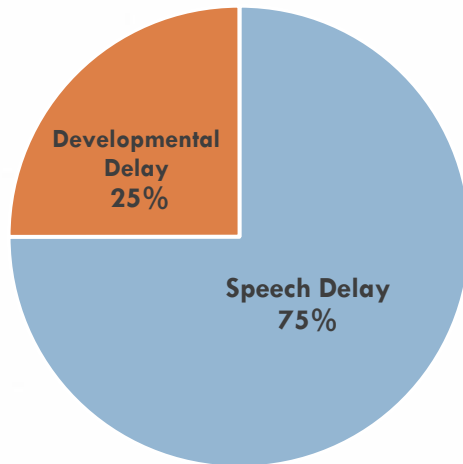
EHS Childcare Partnership services are provided on a full-day, year-round basis, within licensed family childcare homes.



EHS CCP Mental Health & Disabilities Services

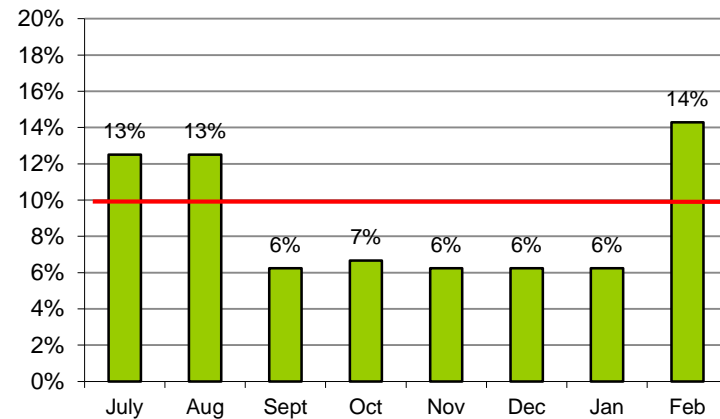


Types of Disabilities



Ten percent (10%) of EHS-CCP children had a disability, meeting the required minimum of 10%.

Monthly Disabilities Enrollment 2017 -2018



Disability Requirement - 10%



EHS CCP Health Services Report

Children and pregnant women with an ongoing source of continuous, accessible health insurance and healthcare	100%
Children up-to-date on a schedule of prevention and primary healthcare	96%
Children diagnosed with chronic condition needing treatment <ul style="list-style-type: none">• Anemia• Asthma• Hearing difficulties• Vision problems	33%
Children who received or are receiving medical treatment for identified conditions	100%
Children with up-to-date immunizations	96%
Children with up-to-date preventative oral health care	100%
Pregnant women receiving prenatal health care	100%

School Readiness

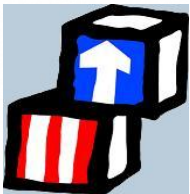
Desired Outcomes: Healthy physical, cognitive, social, language, and emotional development

DRDP- Fall 2017	Approach to Learning- Regulation	SSD (Social- Emotional)	LLD (Language & Literacy)	COG (Cognitive)	Physical Development - Health
Infant Target Mastery Level Goal: Exploring Early	3	3	3	3	3
Mean Score	3.6	3.6	3.8	5.5	4.0
Toddler Target Mastery Level Goal: Exploring Later	4	4	4.6	4	4.4
Mean Score	4.8	4.85	5.4	4.67	5.27

Children's development is assessed on a quarterly basis. Desired Results Developmental Profile (2015) quarterly mean domain subscale scores demonstrate children's competency in meeting and exceed target mastery goals.

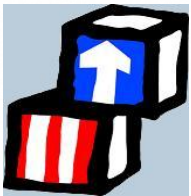
EHS CCP End of Year Financials

Description	JULY 1, 2016– June 30, 2017		
	Federal Funds	Federal Training	Non-Federal Funds
PERSONNEL			
Salaries	\$121,336		
Fringe Benefits	\$35,427		
TRAVEL	0		
SUPPLIES	\$44,947		
TRAINING		\$6,754	
CONTRACTUAL	\$180,647		
OTHER	\$21,072		\$140,369
Indirect	\$36,286		
TOTAL OPERATIONS	\$439,662	\$6,754	\$111,605



EHS CCP FY 2017-18 Budget Projections

Description	Federal Funds	Federal Training	Non-Federal Funds
PERSONNEL			
Salaries	\$142,612		
Fringe Benefits	\$41,643		
SUPPLIES	\$40,065		
TRAINING	0	\$7,295	
CONTRACTUAL	\$148,016		
OTHER	\$34,597		\$103,557
Indirect	\$30,683		
TOTAL OPERATIONS	\$406,933	\$7,295	\$103,557



EHS CCP Federal and Non-Federal Share Budget

HSFC – EHS CCP Program	2018 -2019
Federal Share Budget Total	\$307,357
Non-Federal Share Budget Total	\$76,839
Early Head Start Budget Total	\$384,196

Audits & Reviews

- 2017 A133 audit completed

No findings



HOPE STREET MARGOLIS FAMILY CENTER

Early Head Start Program



Dignity Health™

California Hospital
Medical Center

1401 South Grand Avenue Los Angeles CA 90015

PHONE 213 742 5867 FAX 213 742 5875

hopestreetfamilycenter.org